

# SPARKPOWER™

# PREVENTATIVE MAINTENANCE

## PREDICT. PLAN. PROTECT.

High-performing, reliable electrical equipment is integral to success. The more efficient and effective it is, the more profitable and productive your business becomes. Preventative maintenance from Spark Power inspects key elements, identifies potential issues, and mitigates them before they can negatively impact operations.

## INSPECTIONS

Regularly scheduled maintenance ensures your hardest-working components are safe, compliant, and always delivering consistent performance.



### Thermographic scans

Infrared scans locate potential hazards that you can't always see:

- Heat buildup or hot spots
- System overload points
- Damaged components
- Faulty wiring



### Panel inspections

Make certain your control panels are operational and problem-free:

- Design code verification
- Breaker panel inspection
- Panel circuit review
- Performance testing



### Safety checks

Protecting the safety of your equipment and the people using it:

- Wire size and fuse confirmation
- Motor load performance tests
- Overload protection testing
- Verifying power distribution labels

**Single line drawings development:** Generating new or updated single line drawings to precisely represent your power systems and comply with electrical safety authority mandates.

# STUDIES

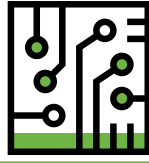
Advanced power system studies on your electrical equipment results in improved safety, reliability, and efficiency.



## Arc flash

Find and resolve system and operator risks within your facility:

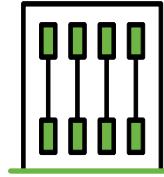
- Arc Flash Studies using IEEE 1584 Standard
- Arc flash equipment labeling according to CSA Z462/NFPA 70E Standard
- Mitigation strategies
- Personal protective equipment (PPE) training and Arc Flash Awareness training



## Coordination studies

Detailed analysis of circuit and equipment failure and its impact in your facility:

- Device time-current response characteristics
- Settings and ratings on all protective devices
- Fuse and breaker relay selectivity validation



## Short circuit studies

Determining the fault current available throughout your system:

- Spot underrated equipment before failure can occur
- Establish proper protective device ratings
- Ensure your power system is protected
- Recommend solutions to identified problems

# HEALTH AND SAFETY

When it comes to safety, **only zero is acceptable. Zero** accidents at work. **Zero** compromise to prioritizing safety.



Spark Power is a leading independent provider of end-to-end electrical services, operations and maintenance services, and energy sustainability solutions to the industrial, commercial, utility, and renewable asset markets in North America. We work to earn the right to be our customers' Trusted Partner in Power™. In the state of California, we operate under license #533593. In the state of Texas, we operate under license #TECL-34613.

**FOR MORE INFORMATION, PLEASE CONTACT US AT 1.833.775.7697 | [WWW.SPARKPOWERCORP.COM](http://WWW.SPARKPOWERCORP.COM)**

**SPARKPOWER™**